



Upon request:

- Circular knives smaller than \varnothing 100 mm
- Meat minzer knives
- Intestinal knives
- Special knives for printing houses, paper- and foil industry

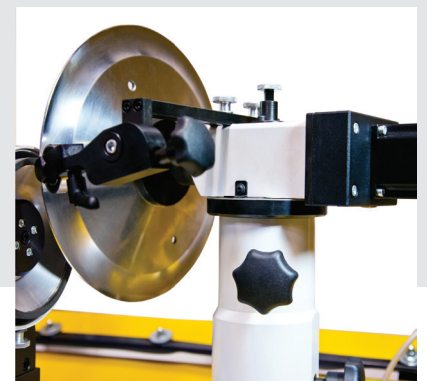
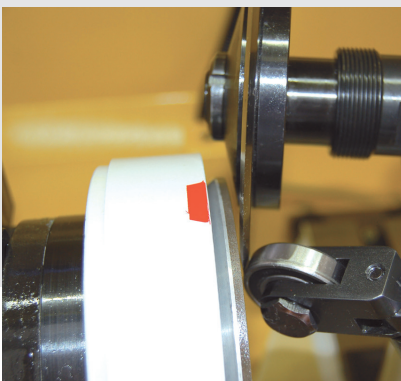
CIRCULAR KNIFE SHARPENING MACHINE MANUAL ITEM NO. 12694

The perfect entry

The perfect entry for professionally and easy sharpening of circular knives

- ✓ made for circular knives from \varnothing 100 – 350 mm
- ✓ adjustment of revolutions of the circular knife
- ✓ burr-free grinding

- ✓ feeding by lateral handwheel
- ✓ cabinet



Technical data

Motor:	230 V, 50 / 60 Hz, 0,37 kW, 2850 rpm ⁻¹
Grinding range circular knives:	from Ø 100 to Ø 350 mm
Reducer ring:	Ø 20 x 22 / 30 / 32 / 42 / 30 with 25er flat
Nominal circular knife boring:	Ø 20 mm
Weight net:	120 kg
Dim (L x W x H):	940 x 830 x 1230 mm

Basic version

- Reducer rings
- CBN grinding wheel Ø 125 mm
- from Ø 100 mm to 350 mm
- Pump cooling
- Cabinet



CBN grinding wheel

CBN B126

Item No. 11315

CBN B76

Item No. 11314



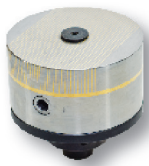
Diamond grinding wheel

D126

Item No. 11317

D76

Item No. 11316



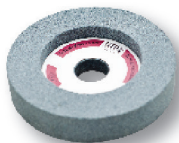
Permanent circular magnetic chuck incl. support

Item No. 15978



Grinding wheel support

Item No. 11247



Silicon carbide dresser wheel

Item No. 15857



Diamond dresser wheel

D356

Item No. 15856



Special support

Ø 40 mm for small circular knives
(special sizes upon request)

Item No. 13987